



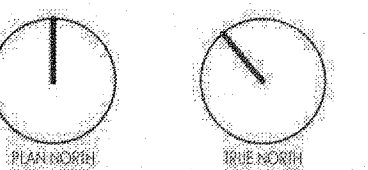
www.stgdesign.com
© STG Design, Inc. All Rights Reserved

STG Design, Inc.
828 West 6th Street
Suite 300
Austin, TX 78703
512.899.3500

1401 SOUTH LAMAR
MULTIFAMILY AND
GARAGE
AUSTIN, TEXAS 78704

These documents may not be reproduced in
any form without the written consent of
STG Design, Inc.

This sheet is only one component of the total
document package which consists of all
sheets of drawings and the project manual.



SITE PLAN RELEASE

FILE NUMBER: SP-2020-0169C EXPIRATION DATE:
CASE MANAGER: RANDY ROUDA APPLICATION DATE: 04/17/2020
APPROVED ADMINISTRATIVELY ON:
APPROVED BY PLANNING COMMISSION ON:
APPROVED BY CITY COUNCIL ON:
under Section 112 of Chapter 25-5 of the Austin City Code.

Director for Development Services Department CS-MU-V-CO, CS-V,
DATE OF RELEASE: CS-CO & CS-VO-CO
Rev. No. 1 Correction No. 1
Rev. No. 2 Correction No. 2
Rev. No. 3

RELEASE OF THIS APPLICATION DOES NOT CONSTITUTE A VERIFICATION
OF ALL DATA, INFORMATION AND CALCULATIONS SUPPLIED BY THE
APPLICANT. THE ENGINEER OF RECORD IS SOLELY RESPONSIBLE FOR THE
COMPLETENESS, ACCURACY AND ADEQUACY OF HIS/HER SUBMITTAL,
WHETHER OF NOT THE APPLICATION IS REVIEWED FOR CODE
COMPLIANCE BY CITY ENGINEERS.

Issues

Project Number: 1618836.00

Project Director: JT

Quality Assurance: Checker

Drawn By: Author

LEVEL P1

AR 2

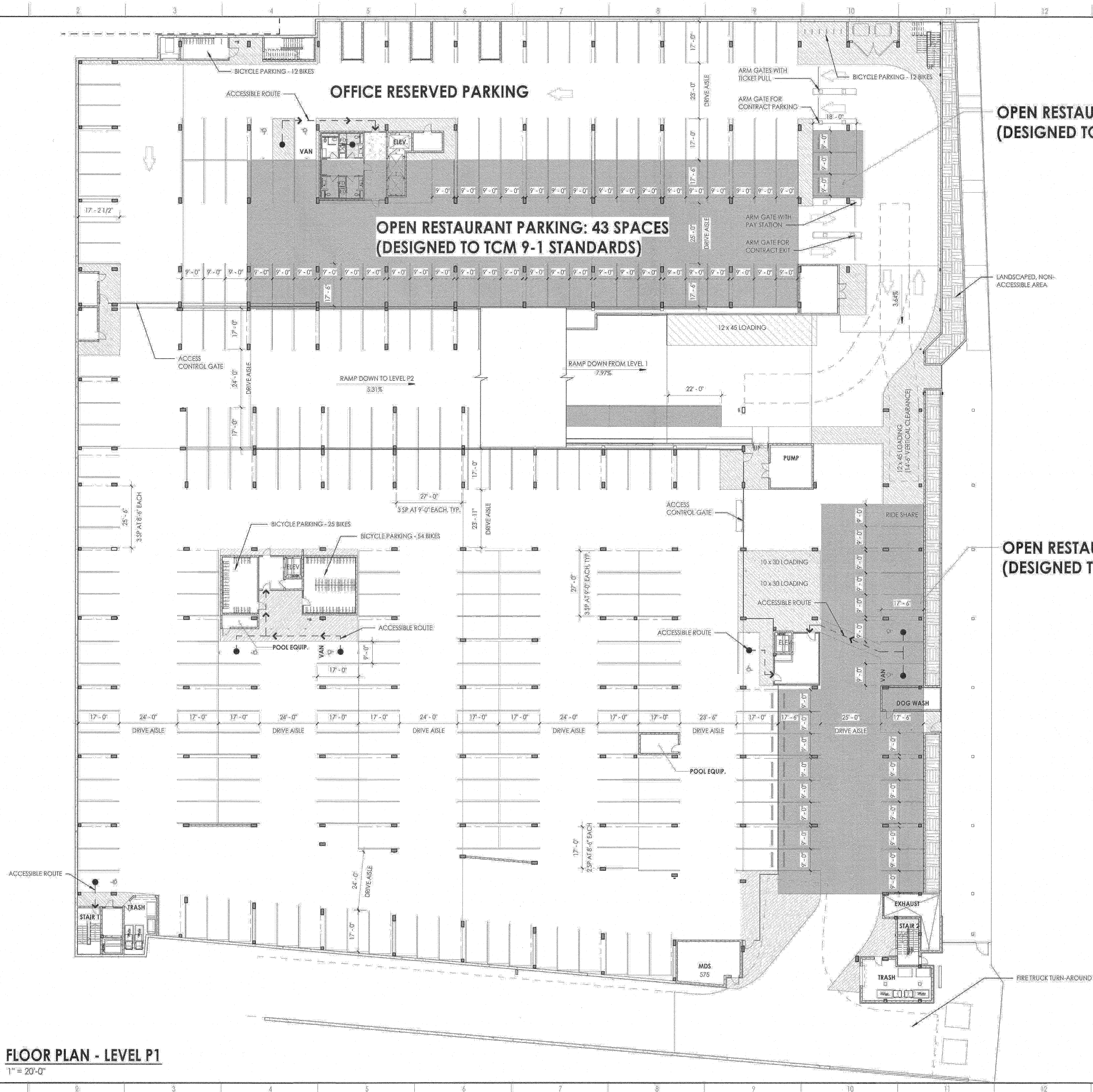
47

OF 58

SP-2020-0169C

A1 FLOOR PLAN - LEVEL P1

1" = 20'-0"



Scale: 1" = 20'-0" (Horizontal) 1" = 10'-0" (Vertical)
Drawing Date: 04/17/2020
Drawing By: JT
Drawing Title: 1401 SOUTH LAMAR MULTIFAMILY AND GARAGE - LEVEL P1 FLOOR PLAN